




# Primary 5 Science (Term 1) - Nanyang (2020)

**Add Questions** **Assign** **Settings** **Review**

 Duplicate  Print  Delete

 **Assign Test**

## Test Introduction

[+ Add Introduction](#)

**14 Questions** (15 Points)

Question Bank: 9,275 Questions 

Test Questions **0 Test Assignments**

### Question 1 Primary 5 Science » Primary 5 Science (Term 1) 2 pts

Samantha identified 3 similar flowers from Plant A. She labelled them flowers P, Q and R. She removed one different part, X, Y and Z, from each flower without removing the flower from the plant. She then dusted pollen grains onto flowers P, Q and R.

After one month, she made the following observation.

Flower	Part removed	Did the flower become a fruit?
P	X	Yes
Q	Y	No
R	Z	Yes

What could parts X, Y and Z most likely be?

- A) 

X	Y	Z
anther	stigma	ovary
- B) 

X	Y	Z
ovary	petal	stigma
- C) 

X	Y	Z
ovary	stigma	anther
- ✓ D) 

X	Y	Z
petal	ovary	anther

Question Type: Multiple Choice

Randomize Answers: No  
Date Added: Thu 2nd Sep 2021  
Last Modified: N/A  
QID#: 28,897,708

[Answers](#) | [Edit](#) | [Duplicate](#) | [Used In](#) | [Reorder](#)

[Remove From Test](#)

## Question 2

Primary 5 Science » Primary 5 Science (Term 1)

2 pts

Seeds J, K, L and M from the same plant are placed under different conditions as shown in the table below. A tick (✓) represents the presence of the condition for the respective seeds.

Seed	Conditions			
	Air	Water	Light	Temperature (°C)
J	✓	✓	✓	5
K		✓	✓	40
L	✓		✓	5
M	✓	✓		40

Which seed, J, K, L or M, would most likely germinate?

- A) J
- B) K
- C) L
- ✓ D) M

**Question Type:** Multiple Choice  
Randomize Answers: No  
Date Added: Thu 2nd Sep 2021  
Last Modified: N/A  
QID#: 28,897,713

[Answers](#) | [Edit](#) | [Duplicate](#) | [Used In](#) | [Reorder](#)

[Remove From Test](#)

## Question 3

Primary 5 Science » Primary 5 Science (Term 1)

2 pts

3 types of plants, E, F and G, were planted in an area as shown in diagram A below.

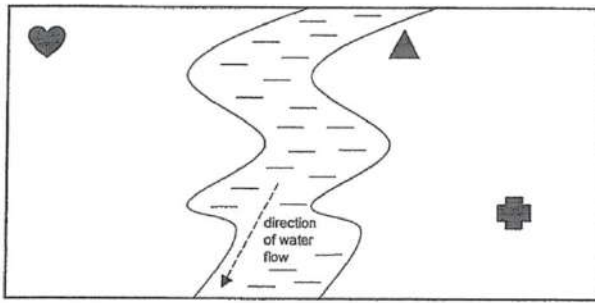


Diagram A

Plant E	
Plant F	
Plant G	

8 years later, more of plants, E, F and G, were found growing on different parts of the same area, as shown in diagram B below.

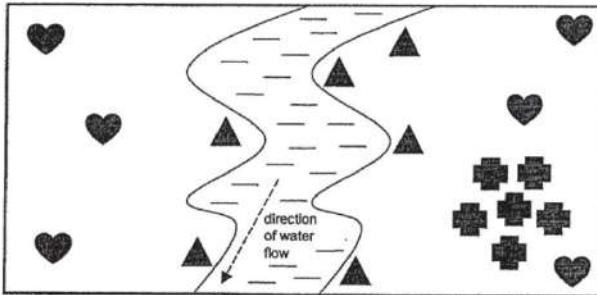


Diagram B

Based only on the above diagrams, what are the methods of dispersal for plants, E, F and G?

A)

Plant E	Plant F	Plant G

animal | splitting | water

✓ B) splitting | animal | water

C) animal | wind | splitting

D) water | animal | wind

**Question Type:** Multiple Choice  
**Randomize Answers:** No  
**Date Added:** Thu 2nd Sep 2021  
**Last Modified:** N/A  
**QID#:** 28,897,735

[Answers](#) | [Edit](#) | [Duplicate](#) | [Used In](#) | [Reorder](#)

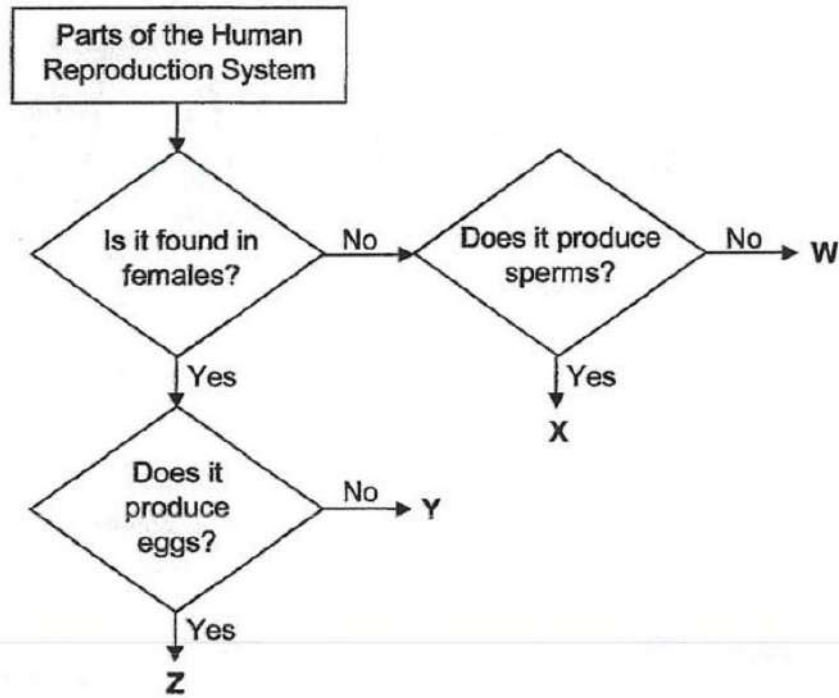
[Remove From Test](#)

### Question 4

Primary 5 Science » Primary 5 Science (Term 1)

2 pts

Study the flowchart below carefully.



Which of the following correctly identifies parts W, X, Y and Z?

- A) 

W	X	Y	Z
testis	penis	ovary	vagina
- B) 

W	X	Y	Z
testis	penis	womb	ovary
- C) 

W	X	Y	Z
penis	testis	ovary	womb
- ✓ D) 

W	X	Y	Z
penis	testis	vagina	ovary

**Question Type:** Multiple Choice  
**Randomize Answers:** No  
**Date Added:** Thu 2nd Sep 2021  
**Last Modified:** N/A  
**QID#:** 28,897,753

[Answers](#) | [Edit](#) | [Duplicate](#) | [Used In](#) | [Reorder](#)

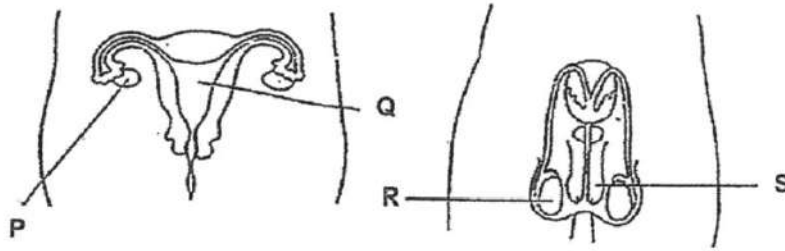
[Remove From Test](#)

## Question 5

Primary 5 Science » Primary 5 Science (Term 1)

2 pts

The diagram below shows the male and female reproductive systems.



Which parts of the reproductive systems above produce reproductive cells?

- ✓ A) P and R only
- B) P and S only
- C) Q and R only
- D) Q and S only

**Question Type:** Multiple Choice  
**Randomize Answers:** No  
**Date Added:** Thu 2nd Sep 2021  
**Last Modified:** N/A  
**QID#:** 28,897,761

[Answers](#) | [Edit](#) | [Duplicate](#) | [Used In](#) | [Reorder](#)

[Remove From Test](#)

## Question 6

Primary 5 Science » Primary 5 Science (Term 1)

2 pts

Which of the following characteristics can be inherited by a child from his parents?

- A Long hair
  - B Double eyelid
  - C Attached earlobe
- A) A and B only
  - B) A and C only
  - ✓ C) B and C only
  - D) A, B and C

**Question Type:** Multiple Choice  
**Randomize Answers:** No  
**Date Added:** Thu 2nd Sep 2021  
**Last Modified:** N/A  
**QID#:** 28,897,774

[Answers](#) | [Edit](#) | [Duplicate](#) | [Used In](#) | [Reorder](#)

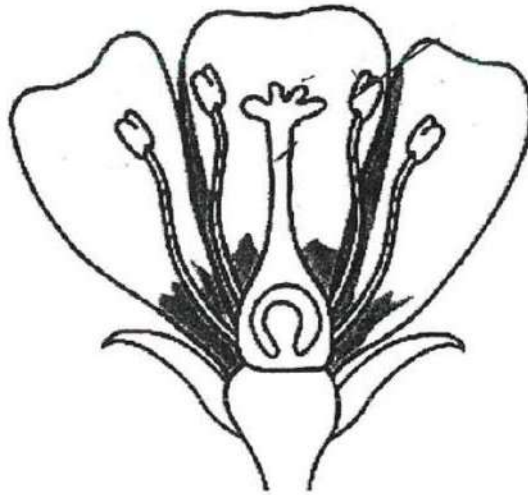
[Remove From Test](#)

## Question 7

Primary 5 Science » Primary 5 Science (Term 1)

0 pts

The diagram below shows the cut section of a flower of Plant X.



Flower of plant X

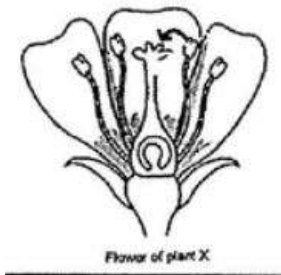
Draw an arrow to show how pollination can take place within the same flower. (1 mark)

*This question is designed for extended answers that parent/ teacher will have to assign and guide child to attempt after the test has been completed.*

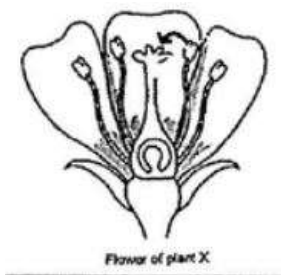
*Grading: This question type is not graded on this system and will not affect the final score as it was designed in such a way that it requires manual assistance.*

**Question Type:** Essay  
**Date Added:** Thu 2nd Sep 2021  
**Last Modified:** N/A  
**QID#:** 28,897,795

**Correctly answered feedback**



**Incorrectly answered feedback**



[Answers](#) | [Edit](#) | [Duplicate](#) | [Used In](#) | [Reorder](#)

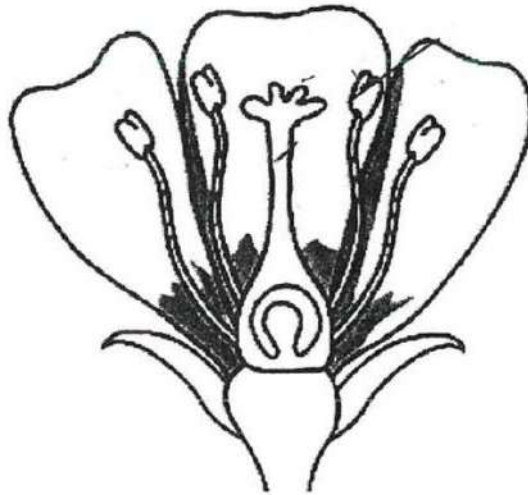
[Remove From Test](#)

## Question 8

Primary 5 Science » Primary 5 Science (Term 1)

0 pts

The diagram below shows the cut section of a flower of Plant X.



Flower of plant X

A bee was observed feeding on the nectar of the flower. Explain how the bee helps in the reproduction process of plant X. (1 mark)

*This question is designed for extended answers that parent/ teacher will have to assign and guide child to attempt after the test has been completed.*

*Grading: This question type is not graded on this system and will not affect the final score as it was designed in such a way that it requires manual assistance.*

**Question Type:** Essay  
**Date Added:** Thu 2nd Sep 2021  
**Last Modified:** N/A  
**QID#:** 28,897,811

**Correctly answered feedback**

The pollen grains sticks on the bee's body and gets transferred from the anther to the stigma for pollination.

**Incorrectly answered feedback**

The pollen grains sticks on the bee's body and gets transferred from the anther to the stigma for pollination.

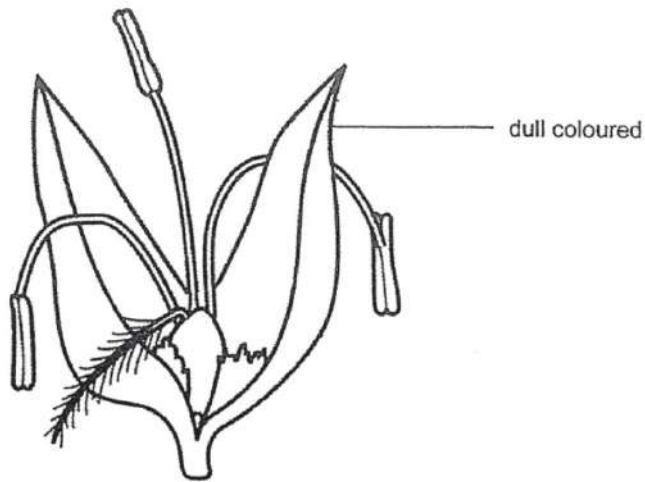
[Answers](#) | [Edit](#) | [Duplicate](#) | [Used In](#) | [Reorder](#)

[Remove From Test](#)

## Question 9

Primary 5 Science » Primary 5 Science (Term 1)

0 pts



State two characteristics that would most likely show that the flower above can be pollinated by wind. [2]

*This question is designed for extended answers that parent/ teacher will have to assign and guide child to attempt after the test has been completed.*

*Grading: This question type is not graded on this system and will not affect the final score as it was designed in such a way that it requires manual assistance.*

**Question Type:** Essay  
**Date Added:** Thu 2nd Sep 2021  
**Last Modified:** N/A  
**QID#:** 28,897,824

**Correctly answered feedback**

The petals of the flower are dull in colour and the anthers are hanging out of the flower.

**Incorrectly answered feedback**

The petals of the flower are dull in colour and the anthers are hanging out of the flower.

[Answers](#) | [Edit](#) | [Duplicate](#) | [Used In](#) | [Reorder](#)

[Remove From Test](#)

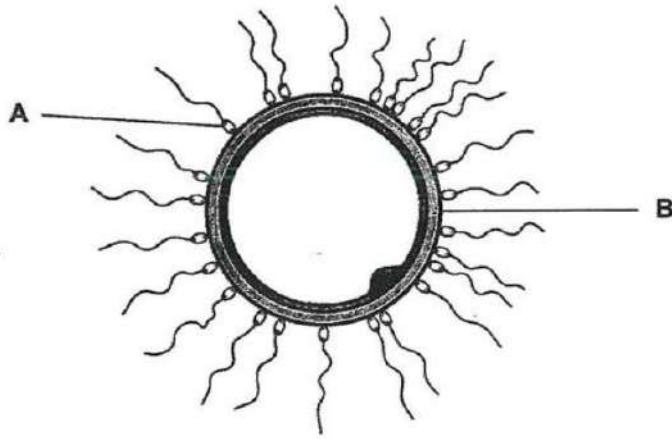
## Question 10

Primary 5 Science » Primary 5 Science (Term 1)

0.5 pts



Study the diagram below carefully.



Identify part A.

Accepted answers:

✓ Sperm

Question Type: Free Text  
Date Added: Thu 2nd Sep 2021  
Last Modified: N/A  
QID#: 28,897,832

[Answers](#) | [Edit](#) | [Duplicate](#) | [Used In](#) | [Reorder](#)

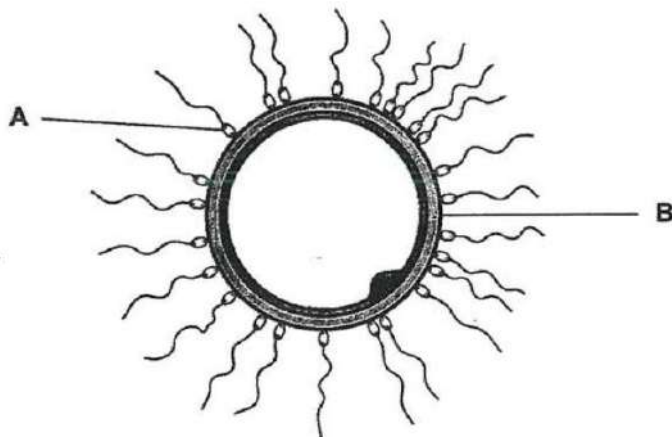
[Remove From Test](#)

## Question 11

Primary 5 Science » Primary 5 Science (Term 1)

0.5 pts

Study the diagram below carefully.



Identify part B.

Accepted answers:

✓ Egg

Question Type: Free Text  
Date Added: Thu 2nd Sep 2021  
Last Modified: N/A

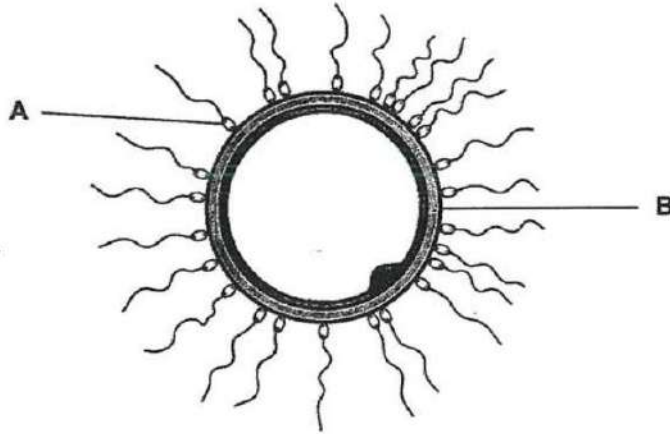
QID#: 28,897,838

[Answers](#) | [Edit](#) | [Duplicate](#) | [Used In](#) | [Reorder](#)
[Remove From Test](#)**Question 12**

Primary 5 Science » Primary 5 Science (Term 1)

1 pt

Study the diagram below carefully.



Identify the process that will happen in the diagram as shown above.

**Accepted answers:**

✓ Fertilisation

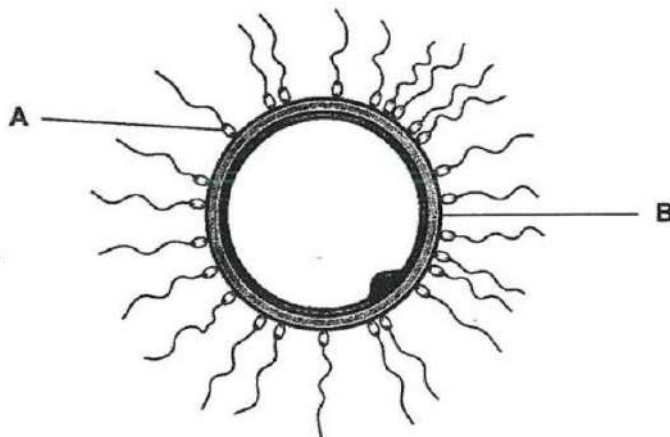
**Question Type:** Free Text  
**Date Added:** Thu 2nd Sep 2021  
**Last Modified:** N/A  
**QID#:** 28,897,851

[Answers](#) | [Edit](#) | [Duplicate](#) | [Used In](#) | [Reorder](#)
[Remove From Test](#)**Question 13**

Primary 5 Science » Primary 5 Science (Term 1)

0 pts

Study the diagram below carefully.



Describe the process that will happen in the diagram as shown above. (1 mark)

*This question is designed for extended answers that parent/ teacher will have to assign and guide child to attempt after the test has been completed.*

Grading: This question type is not graded on this system and will not affect the final score as it was designed in such a way that it requires manual assistance.

**Question Type:** Essay  
**Date Added:** Thu 2nd Sep 2021  
**Last Modified:** N/A  
**QID#:** 28,897,860

**Correctly answered feedback**

One sperm fuses with the egg.

**Incorrectly answered feedback**

One sperm fuses with the egg.

[Answers](#) | [Edit](#) | [Duplicate](#) | [Used In](#) | [Reorder](#)

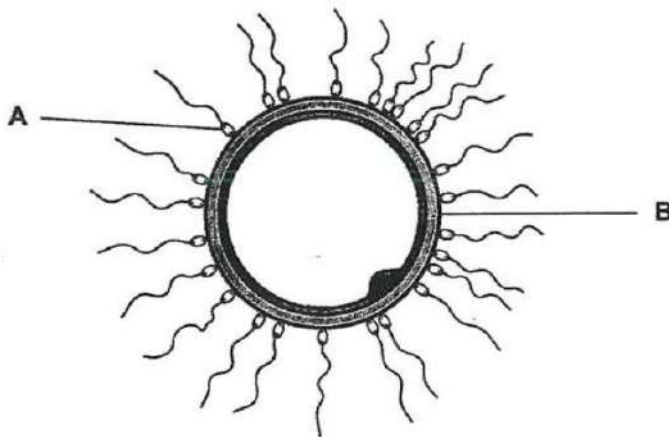
[Remove From Test](#)

**Question 14**

Primary 5 Science » Primary 5 Science (Term 1)

1 pt

Study the diagram below carefully.



In which part of the reproductive system would the fertilized egg develop into a baby? (1 mark)

**Accepted answers:**

✓ Womb

**Question Type:** Free Text  
**Date Added:** Thu 2nd Sep 2021  
**Last Modified:** N/A  
**QID#:** 28,897,867

[Answers](#) | [Edit](#) | [Duplicate](#) | [Used In](#) | [Reorder](#)

[Remove From Test](#)